

battat®

Childhood Is Magical!®

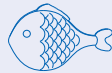
HAPPY CAMPER POP-UP TENT™



Scan QR code for
video instructions

3+

PIECES



1 fish



1 broccoli



1 chicken



1 onion



1 cheese



4 crackers



2 marshmallows



2 toy sticks



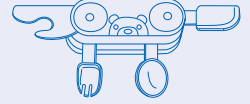
1 spatula



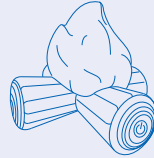
2 plates



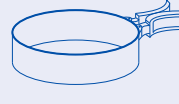
2 cups



1 toy multi-tool



1 toy campfire



1 pan



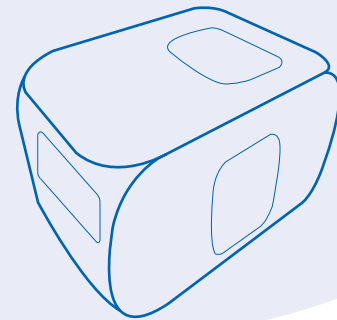
1 pot



1 water bottle with 1 lid

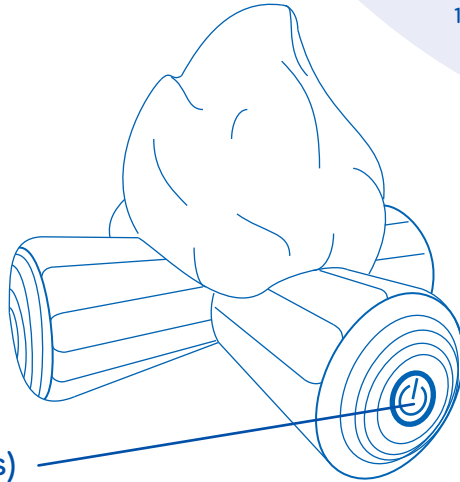


1 tent storage bag



1 pop-up
play tent

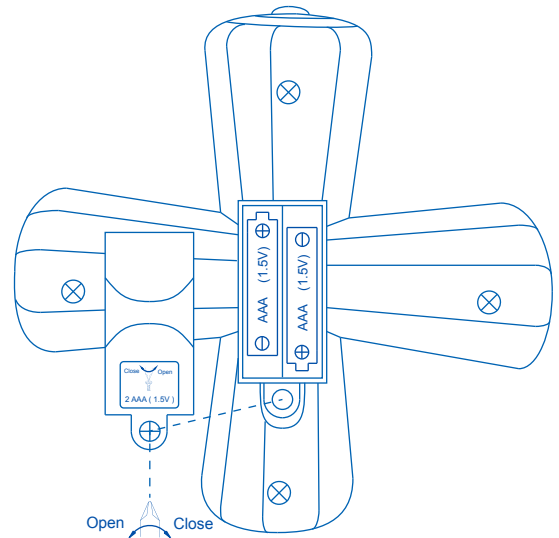
FUNCTIONS:



ON / OFF button
(lights and sounds)

Requires 2 x AAA (1.5V). Batteries not included. Non-rechargeable batteries are not to be recharged. Rechargeable batteries are to be removed from the toy before being charged. Rechargeable batteries are only to be charged under adult supervision. Different types of batteries or new and used batteries are not to be mixed. Only batteries of the same or equivalent type as recommended are to be used. Batteries are to be inserted with the correct polarity. Exhausted batteries are to be removed from the toy. The supply terminals are not to be short-circuited. ATTENTION: When the module's functions lose performance, follow instructions carefully to install new batteries.

REPLACING BATTERIES



This device complies with Part 15 of the FCC Rules. Operation is subject to the following two conditions: (1) this device may not cause harmful interference, and (2) this device must accept any interference received, including interference that may cause undesired operation. Warning: Changes or modifications to this unit not expressly approved by the party responsible for compliance could void the user's authority to operate the equipment. NOTE: This equipment has been tested and found to comply with the limits for a Class B digital device, pursuant to Part 15 of the FCC Rules. These limits are designed to provide reasonable protection against harmful interference in a residential installation. This equipment generates, uses and can radiate radio frequency energy and, if not installed and used in accordance with the instructions, may cause harmful interference to radio or television reception, which can be determined by turning the equipment off and on, the user is encouraged to try to correct the interference by one or more of the following measures: • Reorient or relocate the receiving antenna. • Increase the separation between the equipment and receiver. • Connect the equipment into an outlet on a circuit different from that to which the receiver is connected. • Consult the dealer or an experienced radio/TV technician for help.

⚠ WARNING: KEEP ALL FLAME AND HEAT SOURCES AWAY FROM THIS TENT FABRIC.

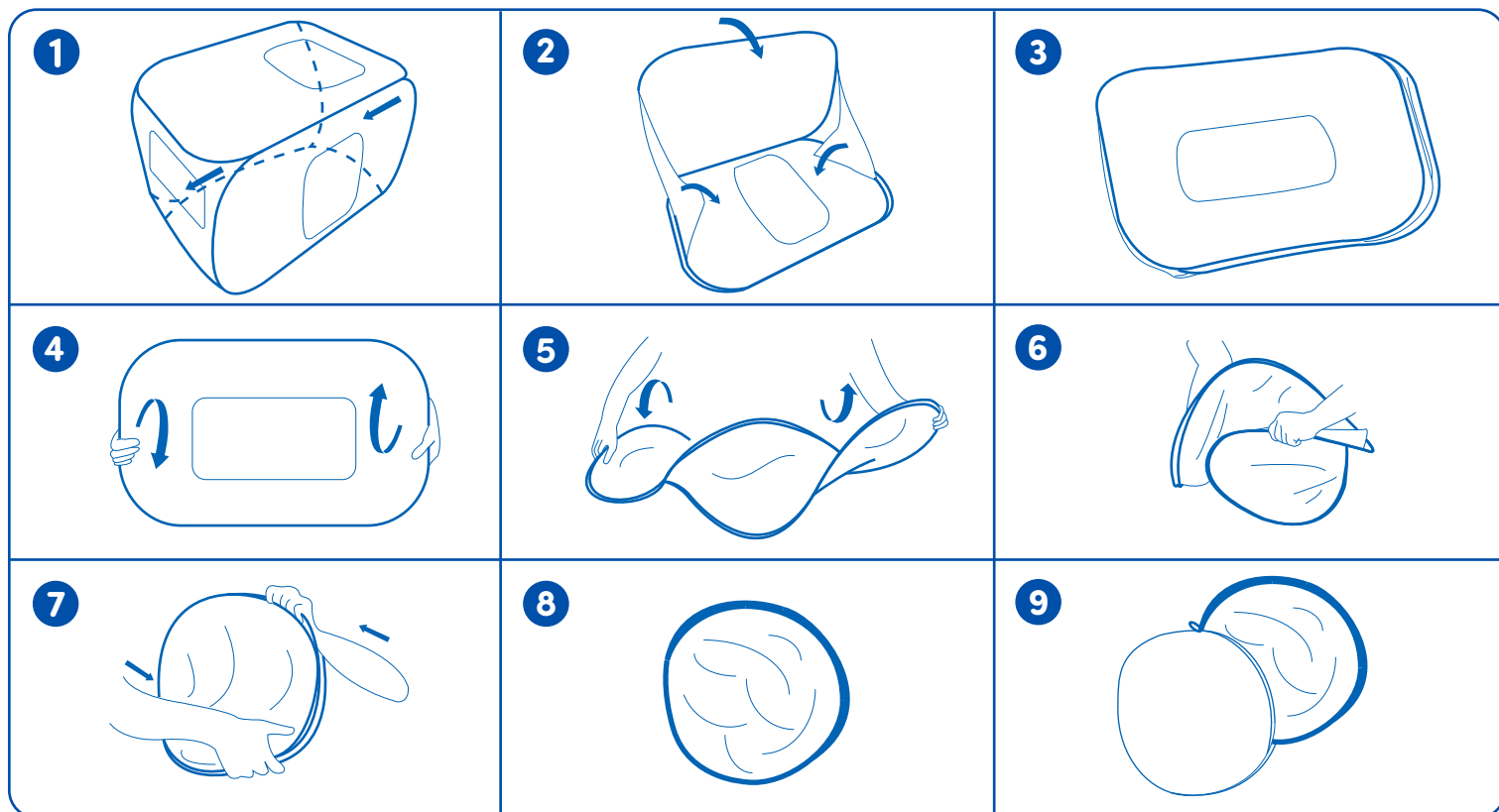
This tent meets the flammability requirements of CPAI-84.
The fabric may burn if left in continuous contact with any flame source.
The application of any foreign substance to the tent fabric may render the flame-resistant properties ineffective.

© 2024 MAISON BATTAT INC.
Manufactured for Maison Battat Inc. 8440 Darnley Road, Montreal, P.Q. H4T 1M4
Designed by Maison Battat Inc. Battat® is a registered trademark of Maison Battat Inc.
Made in China. All Battat® products meet all US safety standards.
Colors may vary. Please retain this information for future reference.
Please remove all packaging materials before giving to children.

CAN ICES-3 (B)/NMB-3(B) **BT1820**

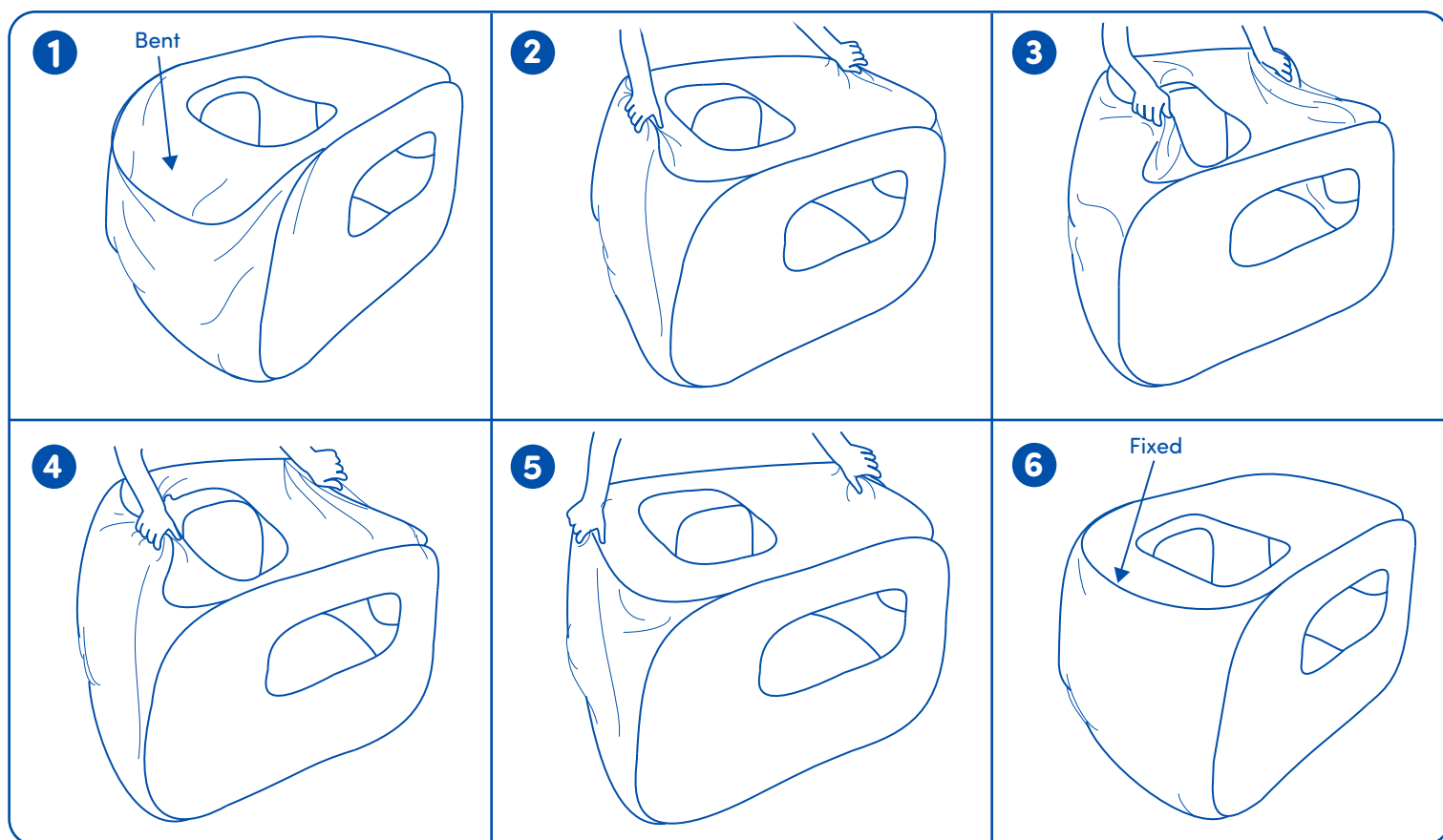
⚠ **WARNING:**
CHOKING HAZARD—Small parts.
Not for children under 3 years.

HOW TO FOLD AND STORE THE TENT:



HOW TO CORRECT THE TENT'S SHAPE:

If the tent's wire frame is bent, lift the top of the tent, bring both sides together, and then release to correct the shape. Repeat these steps if needed.



USER GUIDE

- The tent is not suitable for wet or rainy environments. If the tent gets wet, leave it open in an airy space to dry. To maintain quality, do not leave the tent in the sun for prolonged periods. Surface clean only.
- Young children require adult supervision when playing in the tent.

ATTENTION: For pretend play use only. Clean toy thoroughly before use.



BT1820