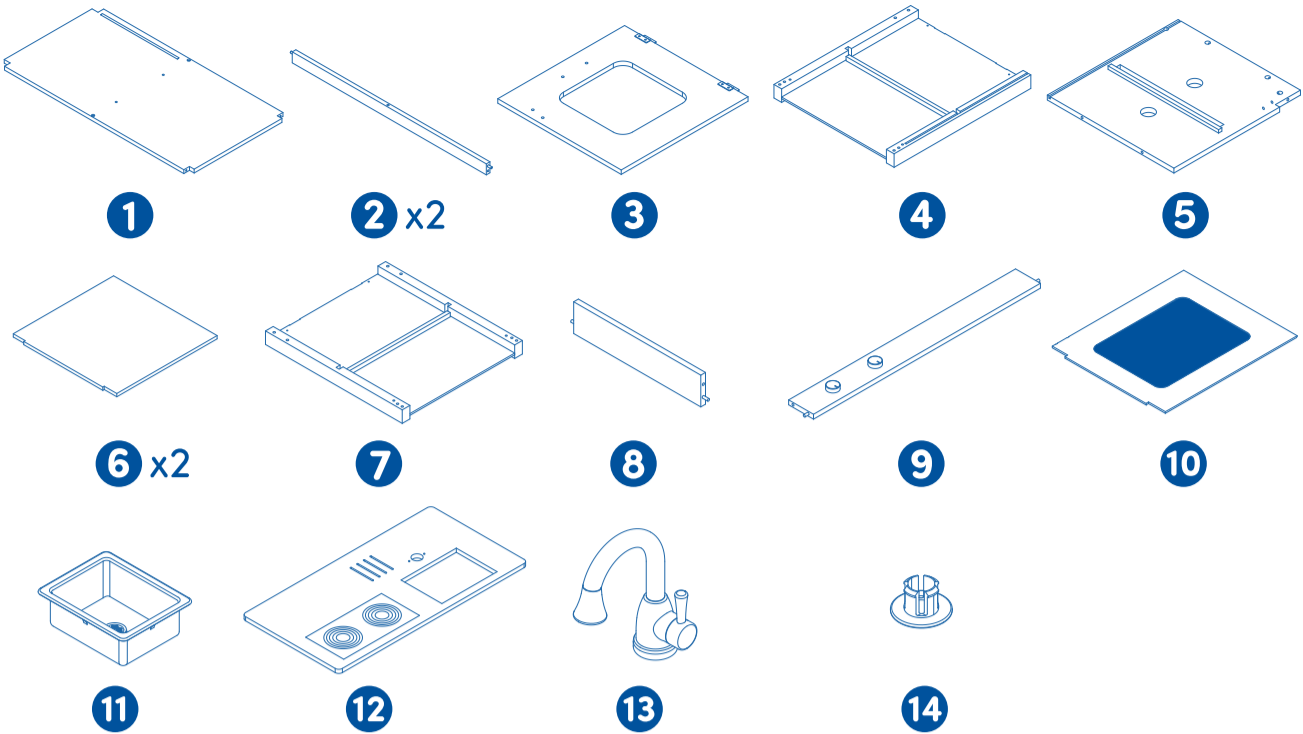




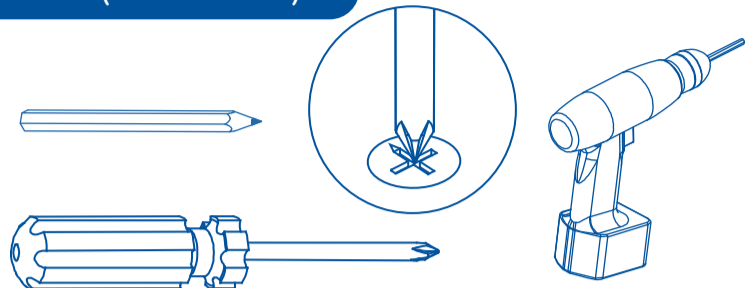
Scan QR code for video instructions

TWO N' ONE  
KITCHEN CAFÉ™

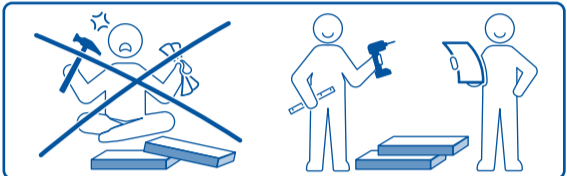
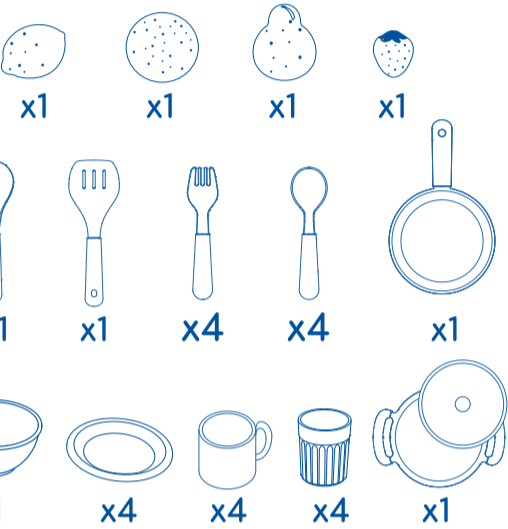
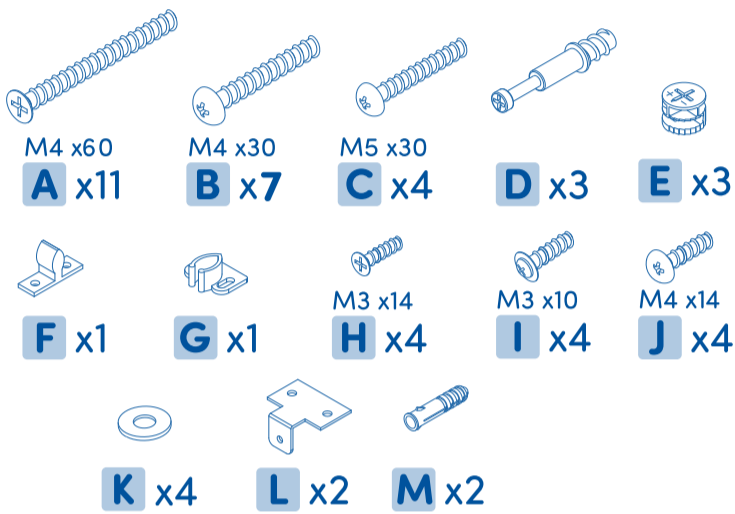
Includes



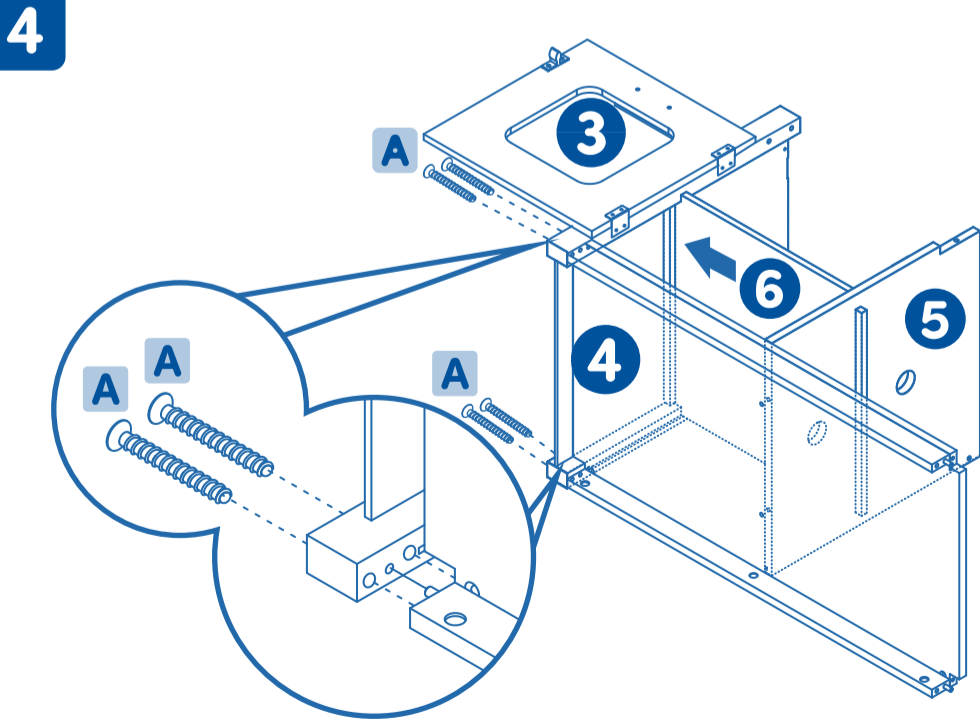
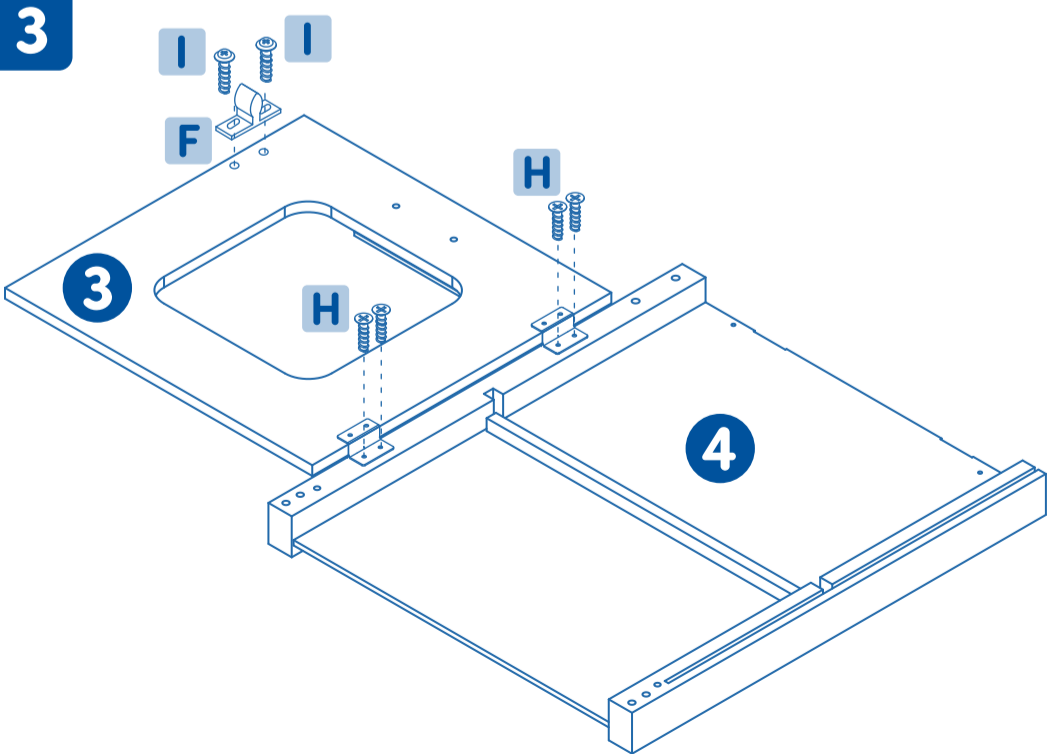
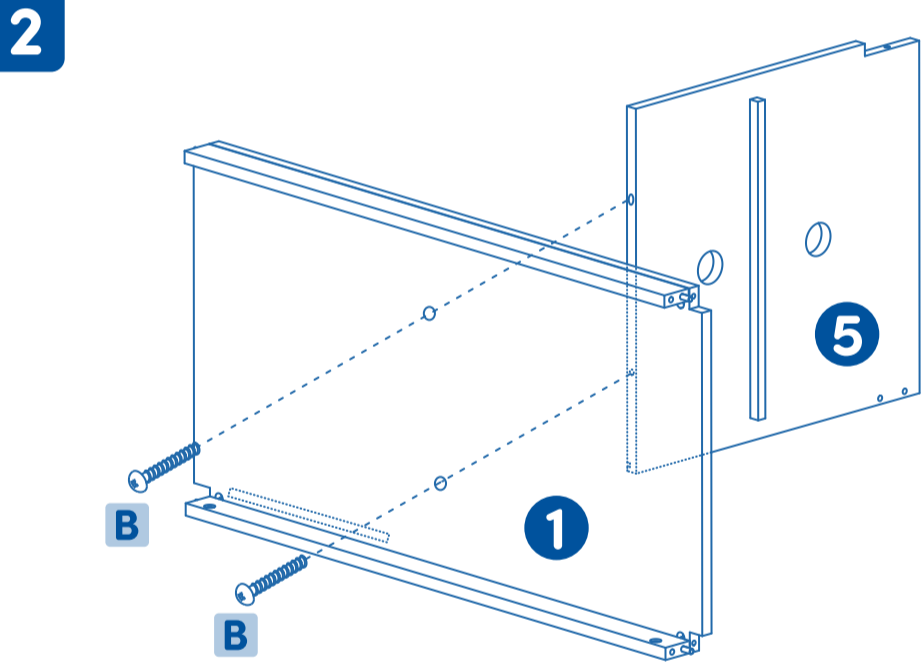
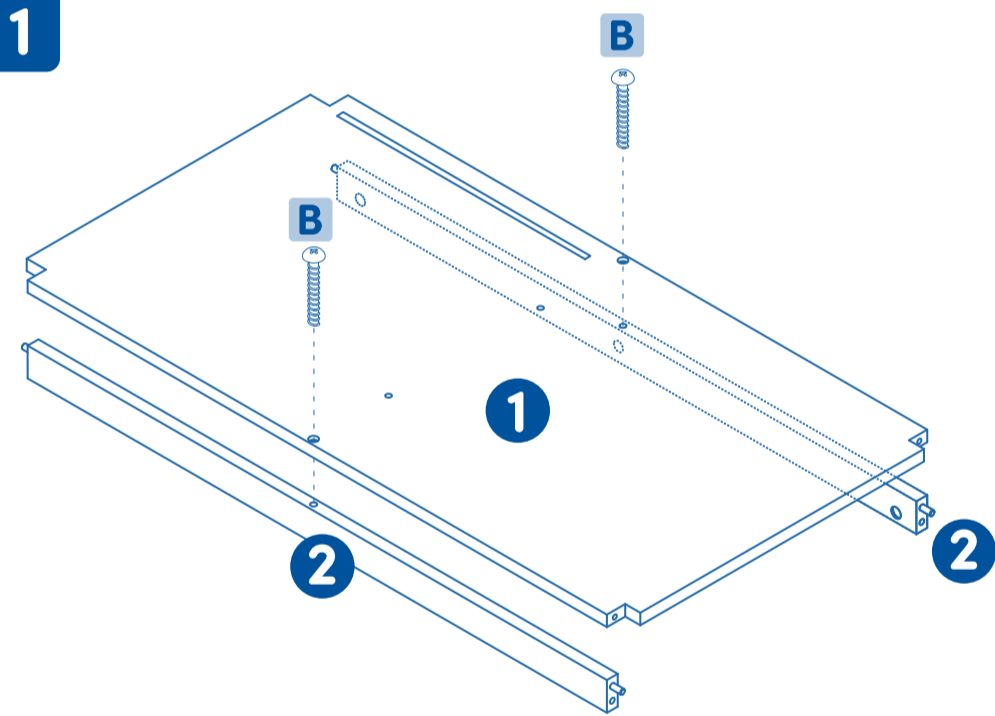
Tools (Not included)



Hardware List



⚠ ATTENTION: This item should be assembled by 2 adults. Assemble on a padded surface (e.g. rug, cardboard) to avoid damage to item and/or floors.



⚠ **CAUTION:** Adult assembly required. Keep plastic bags out of children's reach during and after assembly.

Please remove all packaging materials before giving to children. Please retain this information for future reference.

Diagram 8 shows the front panel being attached to the frame. The panel is shown in two positions: one being lowered into the frame and another being fully seated. Screws labeled 'A' are used to secure the panel to the frame. A callout '9' points to the front panel.

**9**

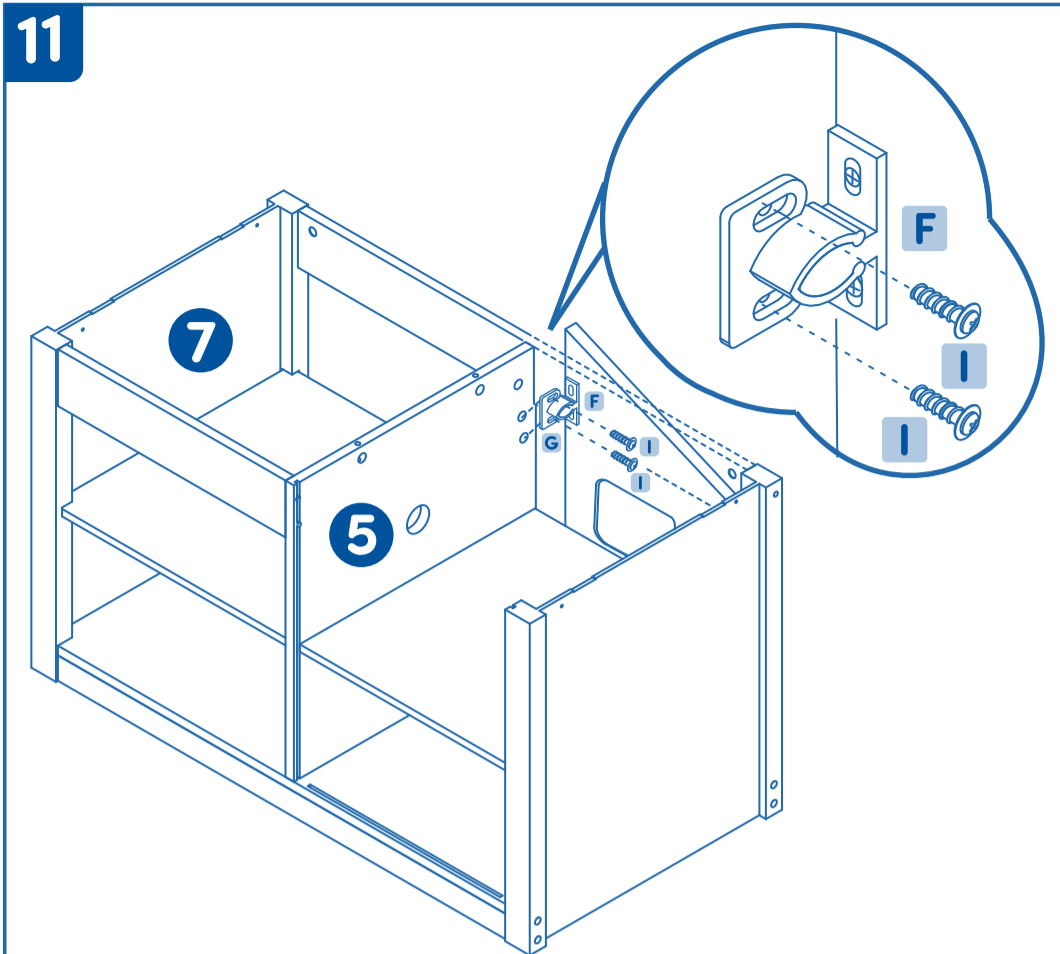
Diagram 9 illustrates the final step of attaching the door to the cabinet frame. The main view shows the cabinet frame with parts 4, 5, and 7. A circular inset provides a close-up of the door hinge assembly. A blue arrow points from the hinge on the door to the hinge on the frame. A label 'E' is placed near the hinge. A curved blue arrow indicates the door should be swung to the right. A second circular inset shows the door being swung to the right, with a blue arrow indicating the direction of movement. The text 'Arrow facing right' is written next to the inset.

Arrow facing right

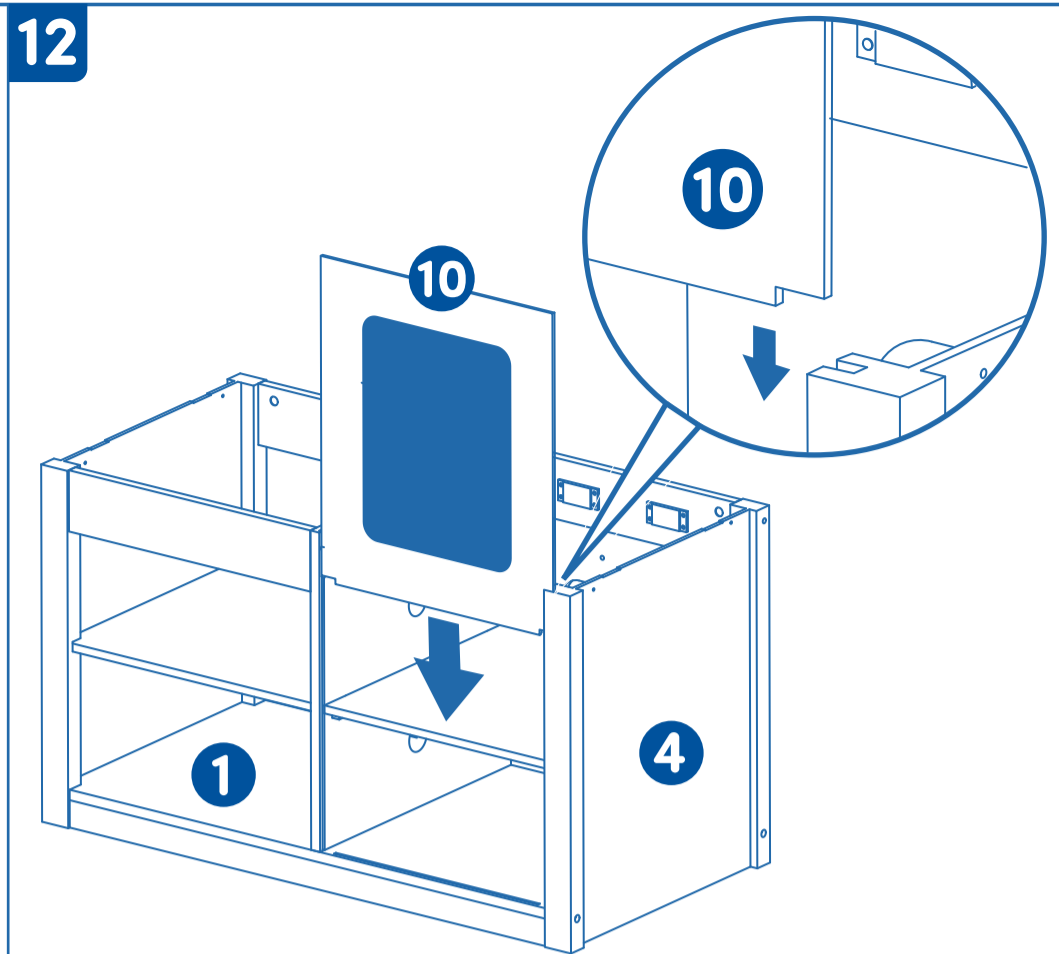
[illegible]

Put **G** on **F** before proceeding to Step 11

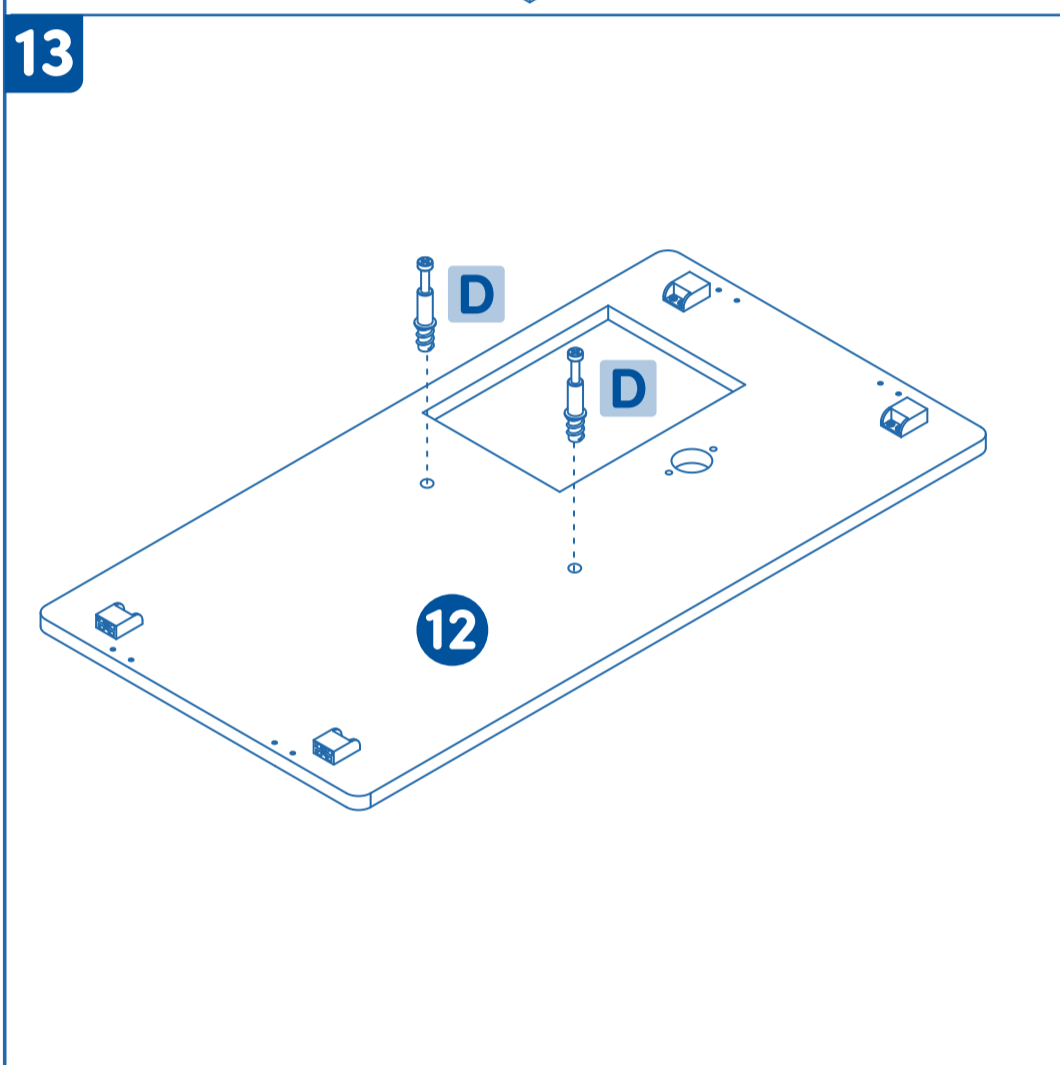
11



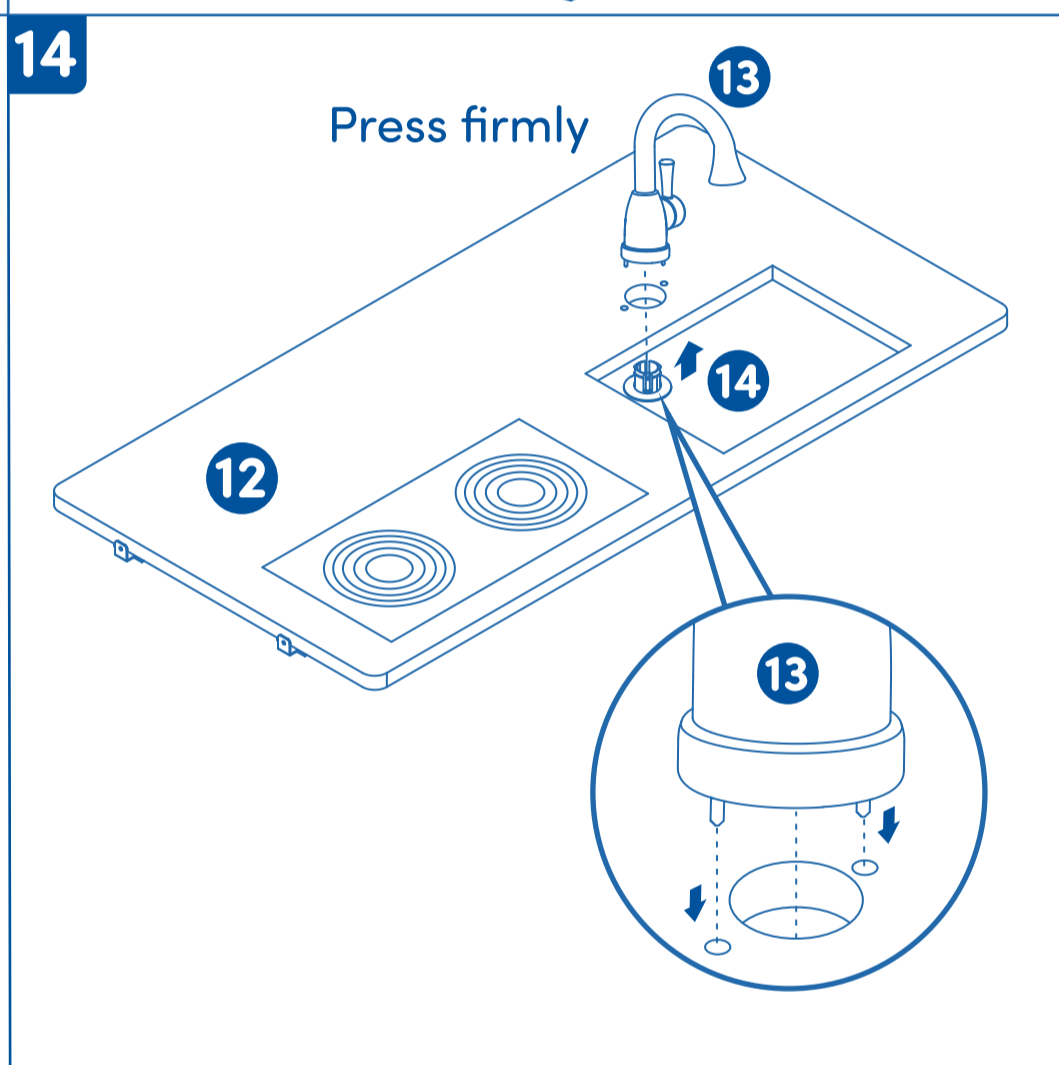
12



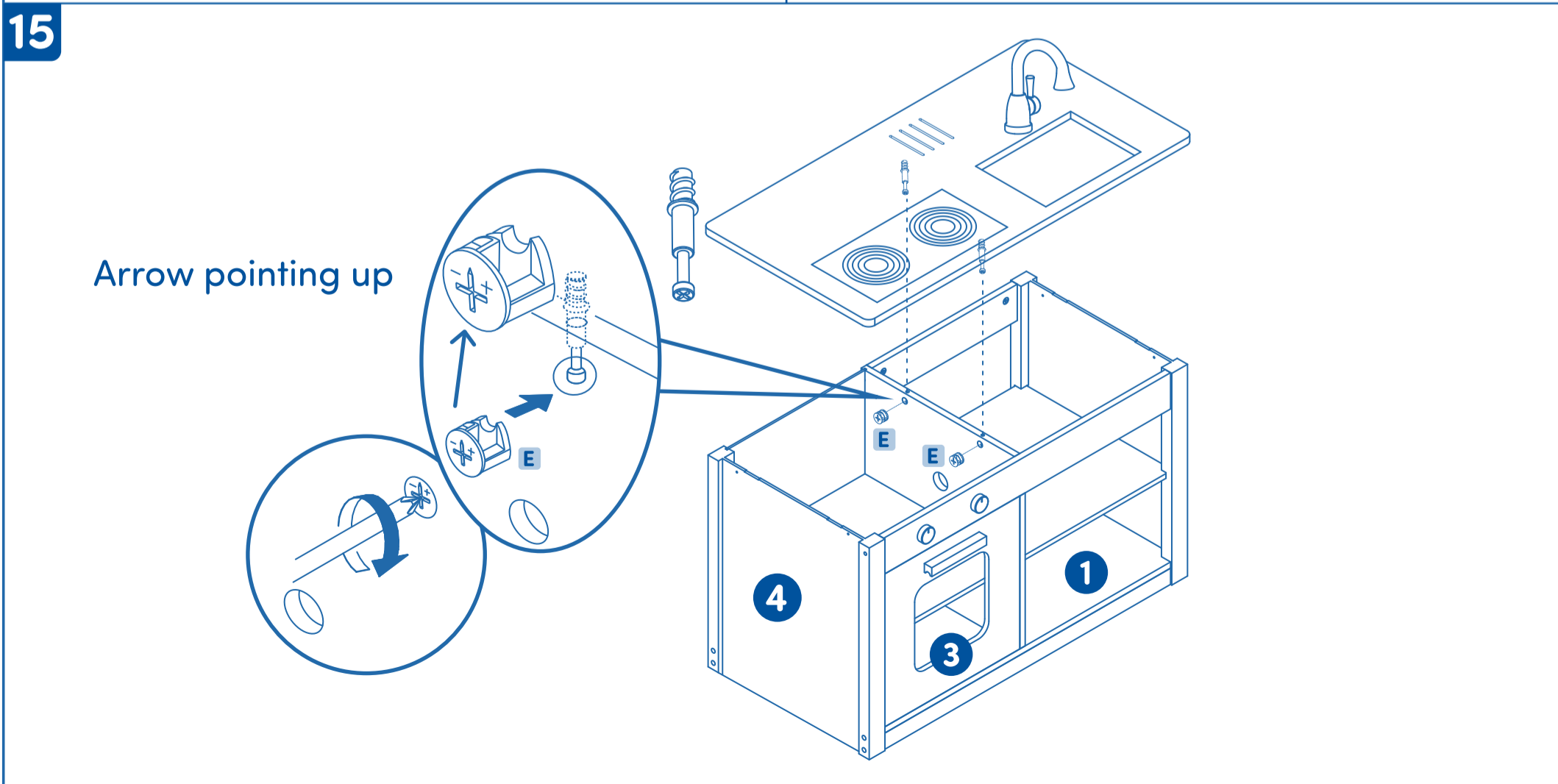
13



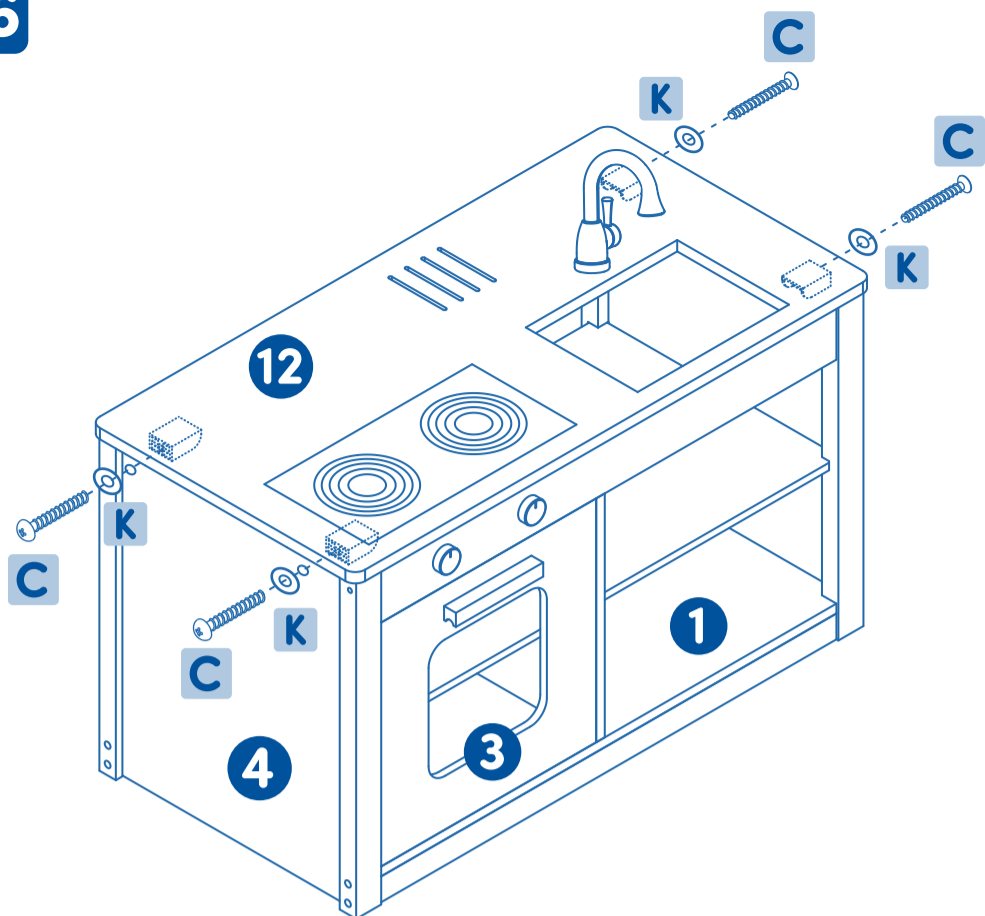
14



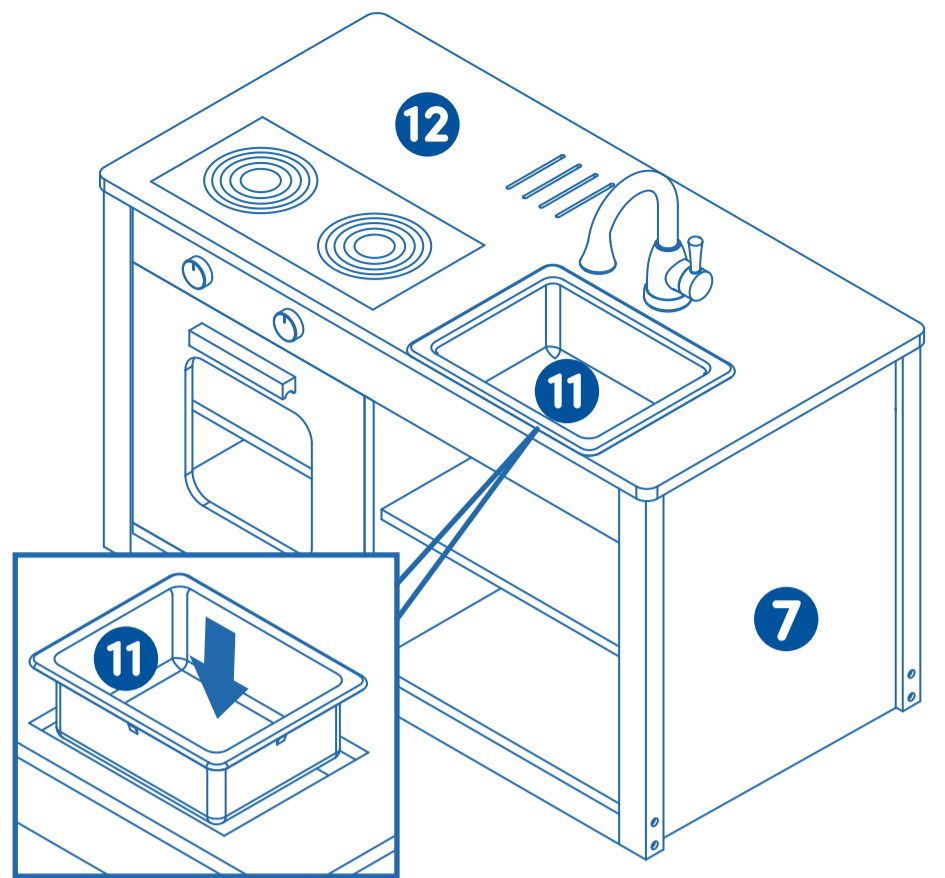
15



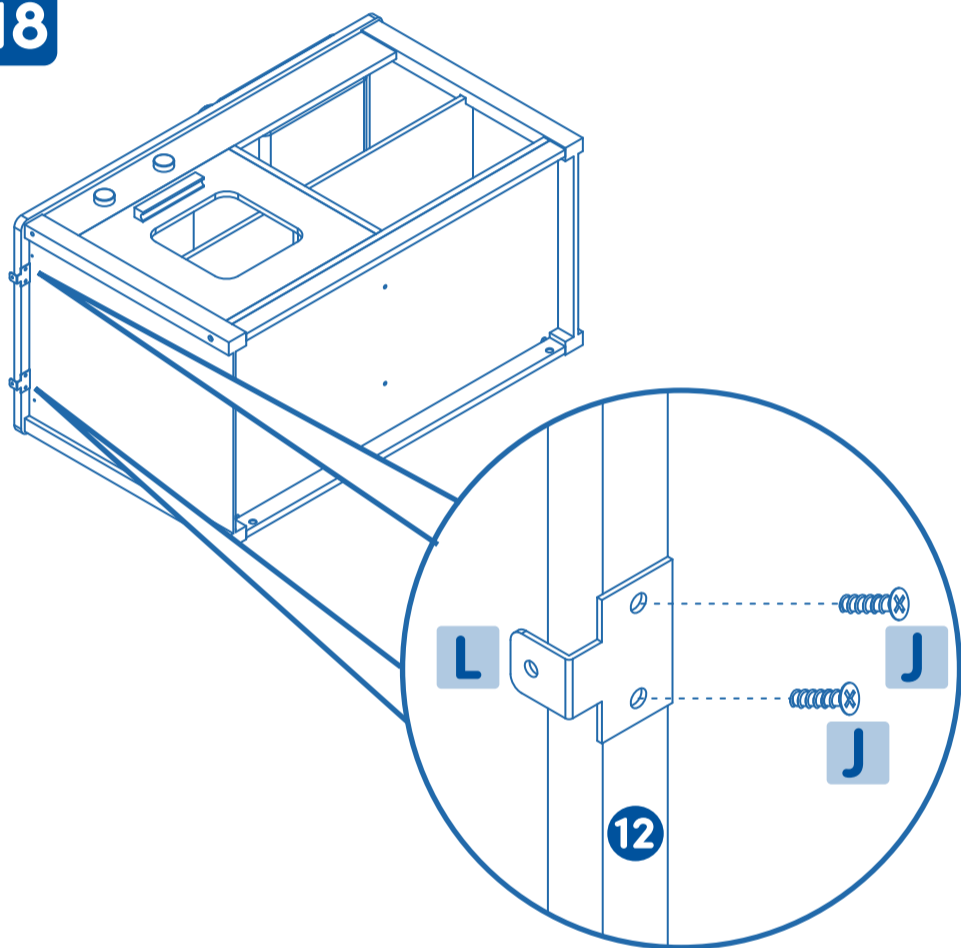
16



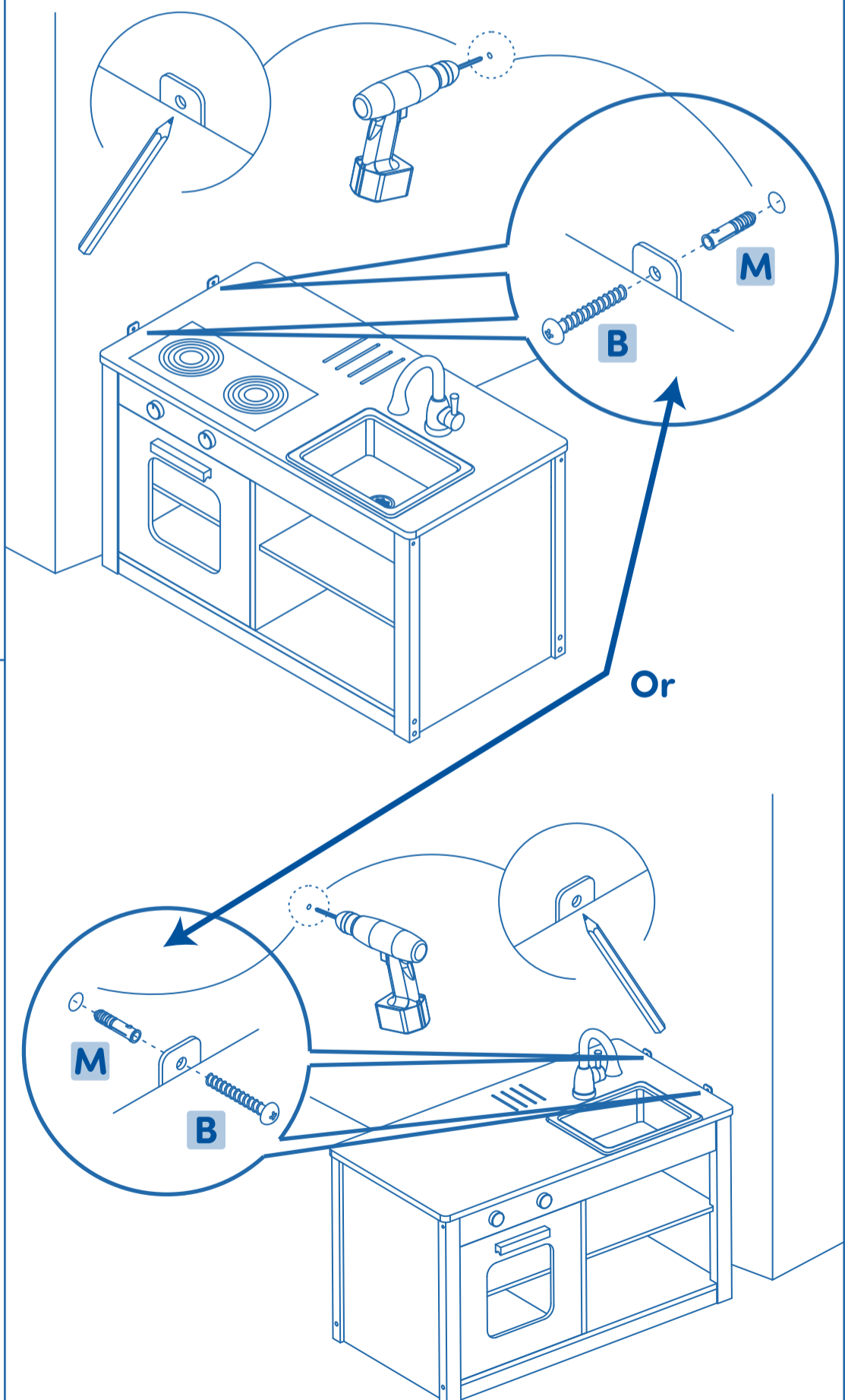
17



18



19



**WARNING:** Serious or fatal crushing injuries can occur from furniture tipping over. To prevent tipping this furniture must be used with the wall attachment device(s) provided.

