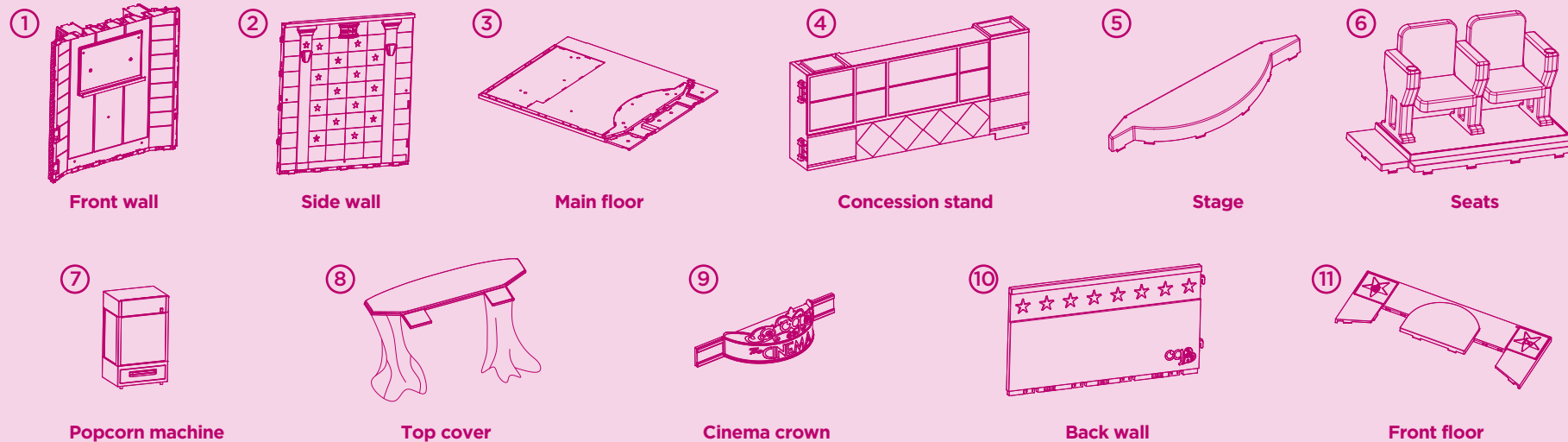


Print 1 solid color PMS 676 C

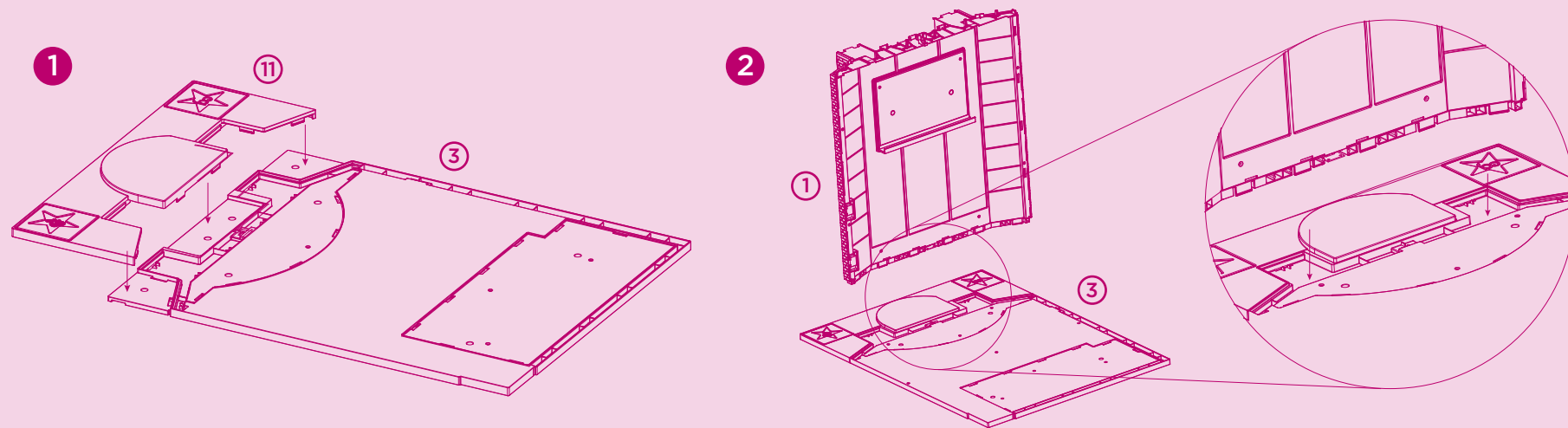
# OG Cinema Movie Theater Set™

age  
3+

## Parts List:



## Instruction for Movie Theater assembly



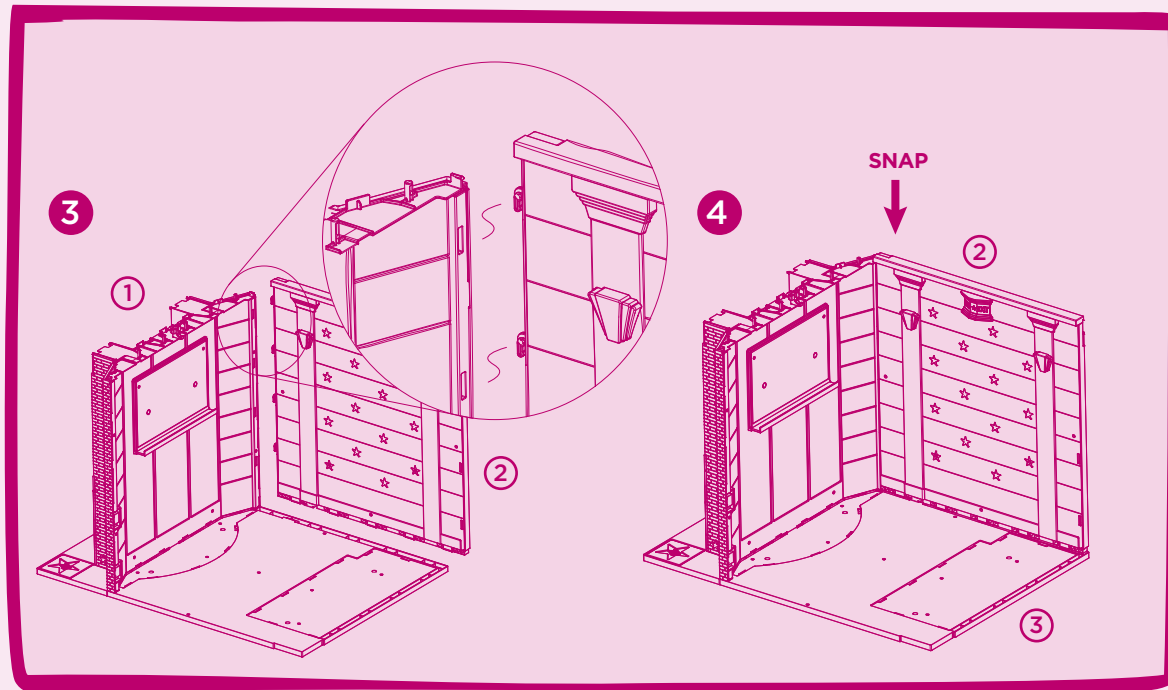
1. Snap the front floor (11) onto the main floor (3) as pictured above.
2. Attach the front wall (1) by snapping it into the floor (3).

BD37857

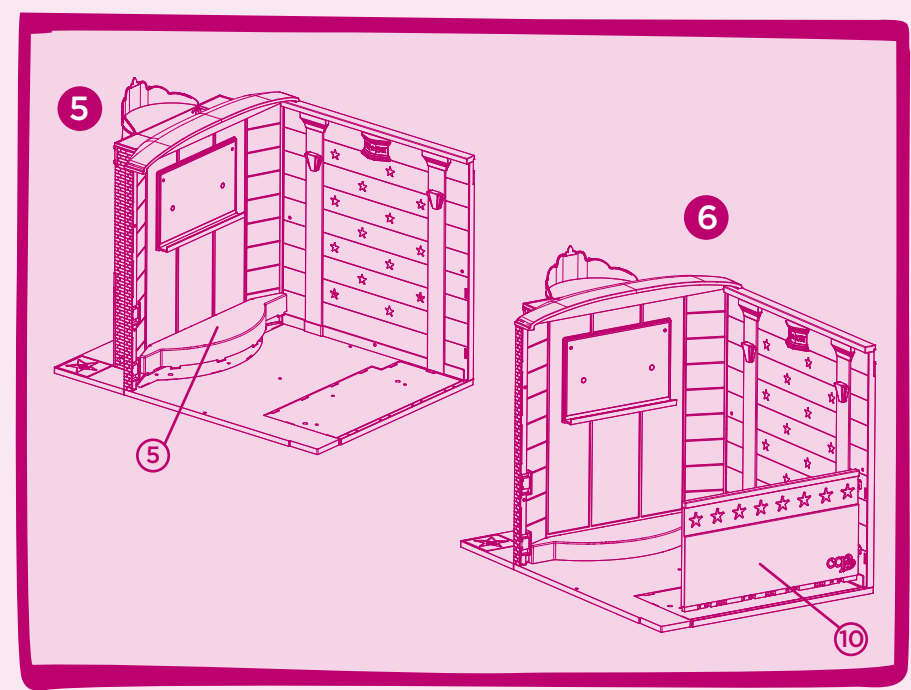
our  
generation®

Size A4: 11.69" x 8.27"

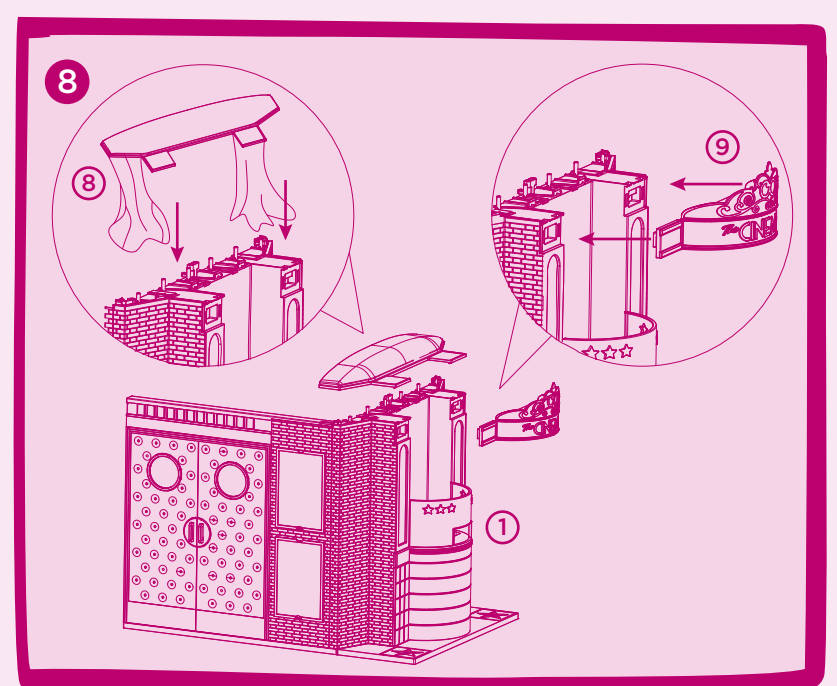
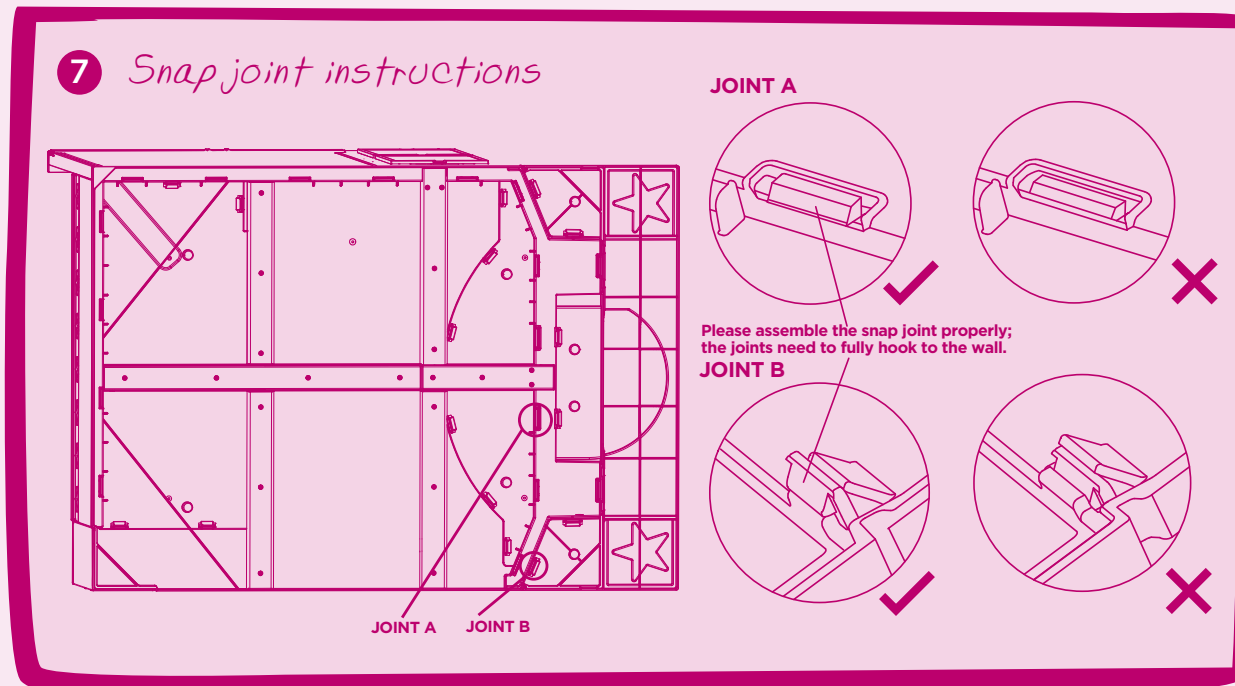
# Print 1 solid color PMS 676 C



3. Insert the side wall (2) hooks into the front wall holes (1).  
4. Press down on the side wall (2) and snap it into the main floor (3).

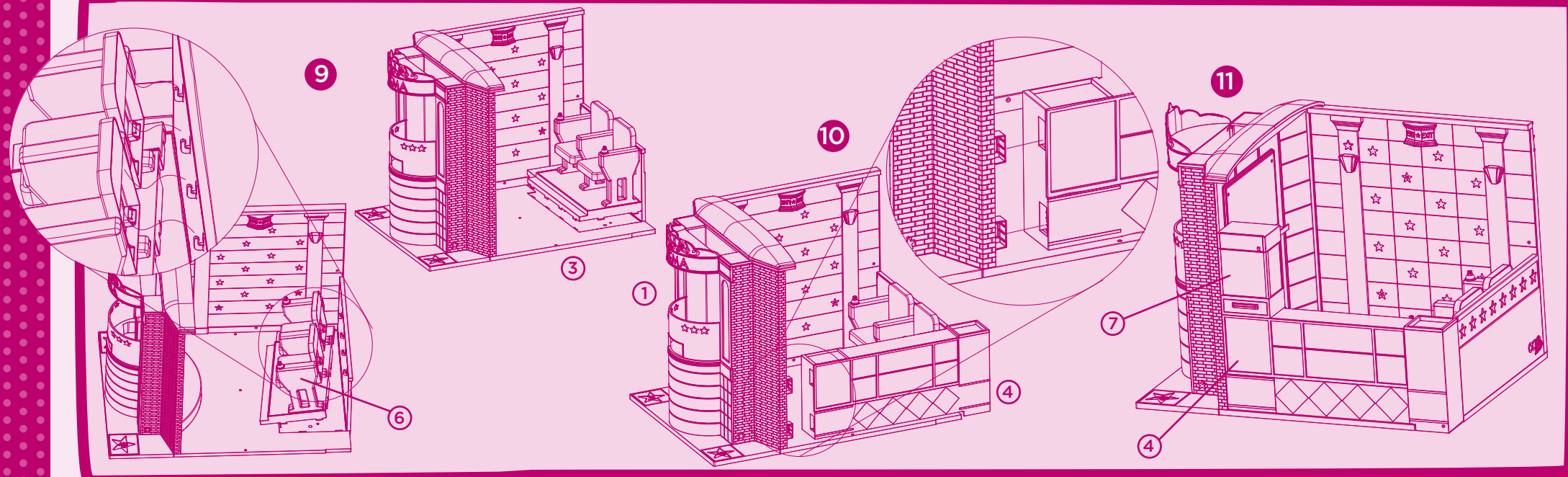


5. Snap the stage (5) into the main floor (3).  
6. Insert the back wall hooks (10) into the side wall holes (1) and snap it into the main floor (3).



8. Next, snap the top cover (8) onto the front wall (1) and insert the cinema crown (9).

Print 1 solid color PMS 676 C



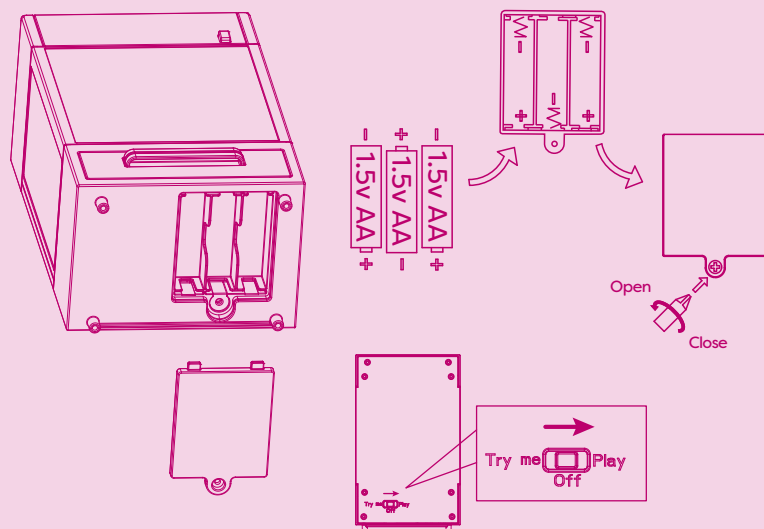
9. Hook the seats (6) to the back wall (10) and snap them into the main floor (3).

10. Slide the concession stand (4) into the joints on the front wall (1).

11. Place the popcorn machine (7) on the concession stand top (4).

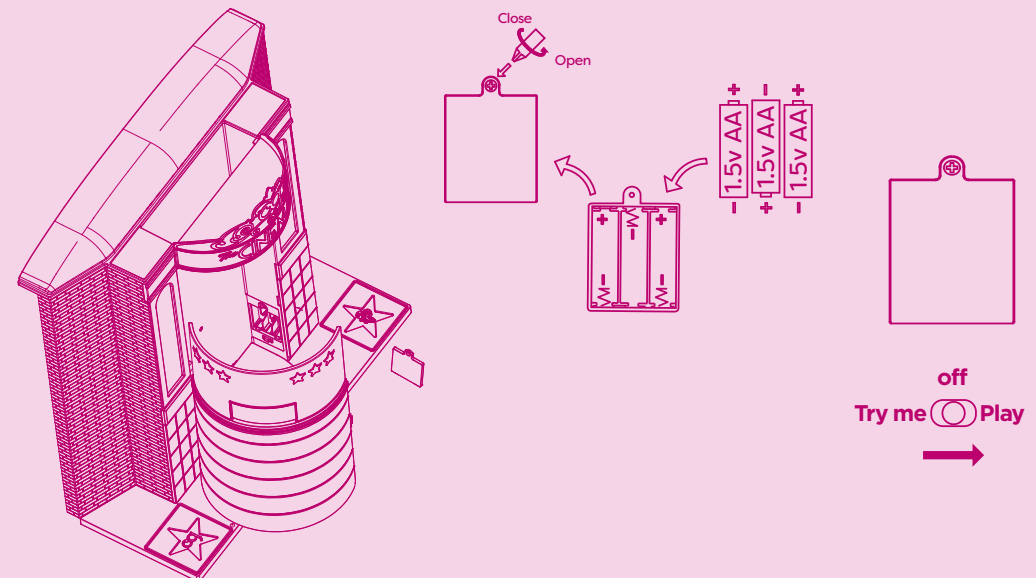
#### BATTERY REPLACEMENT FOR POPCORN MACHINE

1. Open the battery cover with a screwdriver.
2. Install 3 X 1.5V AA batteries and follow the polarity.
3. Product is shipped in "Try Me" mode.
4. Slide the back switch to the "Play" position.



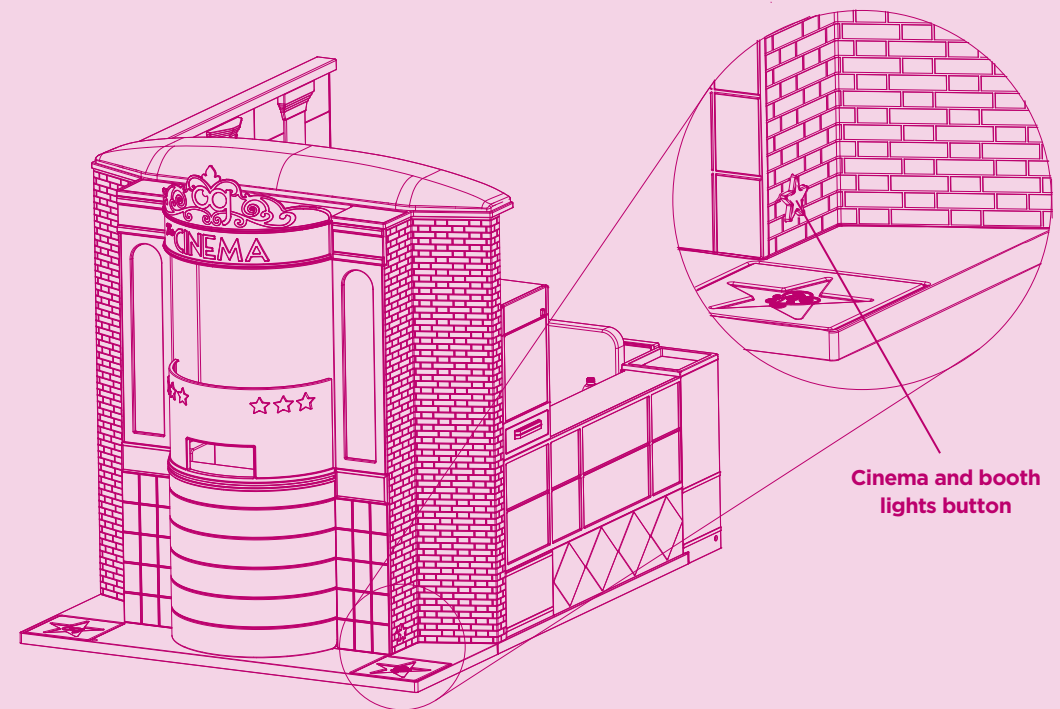
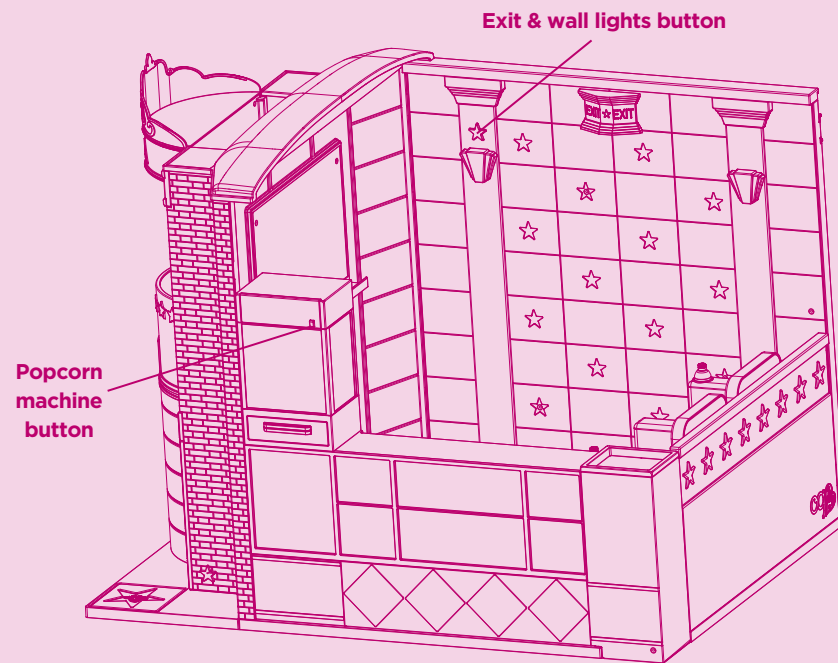
#### BATTERY REPLACEMENT FOR MOVIE THEATER

1. Open the battery cover with a screwdriver.
2. Install 3 X 1.5V AA batteries and follow the polarity.





## Instructions for fun features



This device complies with Part 15 of the FCC Rules. Operation is subject to the following two conditions: (1) this device may not cause harmful interference, and (2) this device must accept any interference received, including interference that may cause undesired operation. Caution: changes or modifications not expressly approved by the party responsible for compliance could void the user's authority to operate the equipment.

NOTE: This equipment has been tested and found to comply with the limits for a Class B digital device, pursuant to Part 15 of the FCC Rules. These limits are designed to provide reasonable protection against harmful interference in a residential installation. This equipment generates, uses and can radiate radio frequency energy and, if not installed and used in accordance with the instructions, may cause harmful interference to radio communications. However, there is no guarantee that interference will not occur in a particular installation. If this equipment does cause harmful interference to radio or television reception, which can be determined by turning the equipment off and on, the user is encouraged to try to correct the interference by one or more of the following measures:

- Reorient or relocate the receiving antenna.
- Increase the separation between the equipment and receiver.
- Connect the equipment into an outlet on a circuit different from that to which the receiver is connected.
- Consult the dealer or an experienced radio/TV technician for help.

**WARNING:**  
CHOKING HAZARD - Small parts.  
Not for children under 3 years.

### CAUTION:

Uses 6 x AA (1.5V) size batteries - Included  
Do not mix old and new batteries. Do not mix alkaline, standard (carbon-zinc), or rechargeable batteries.  
Do not dispose of this product in fire. Batteries inside product may explode or leak.

