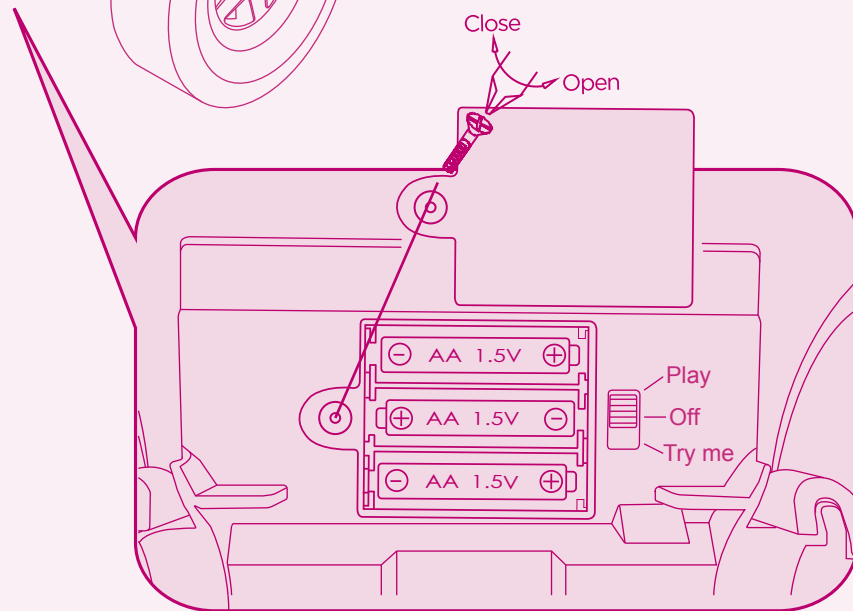
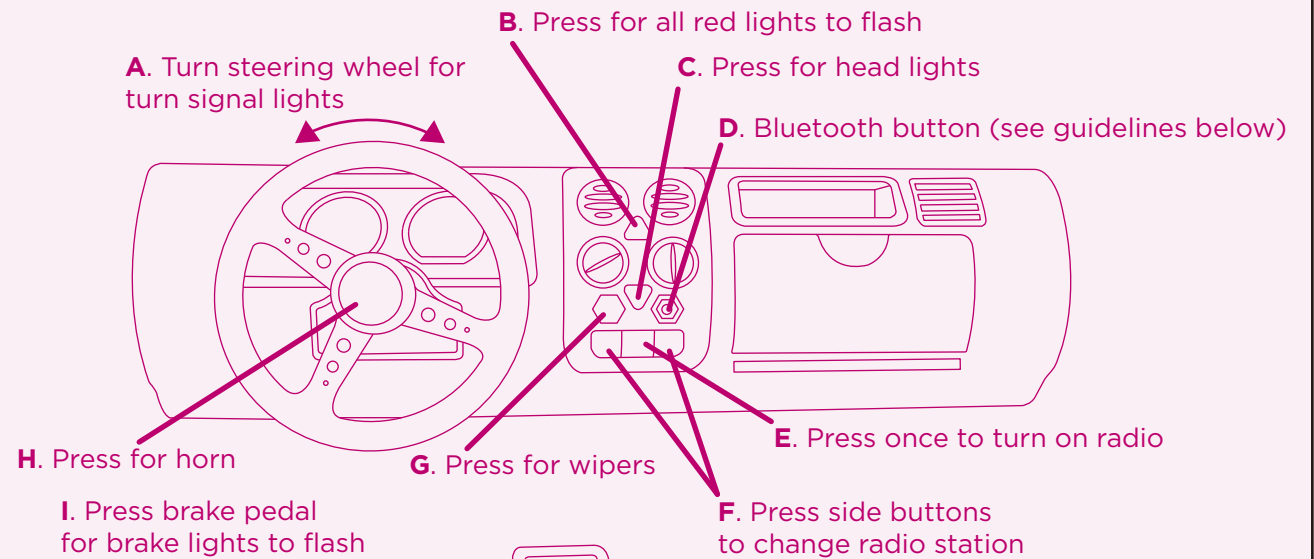
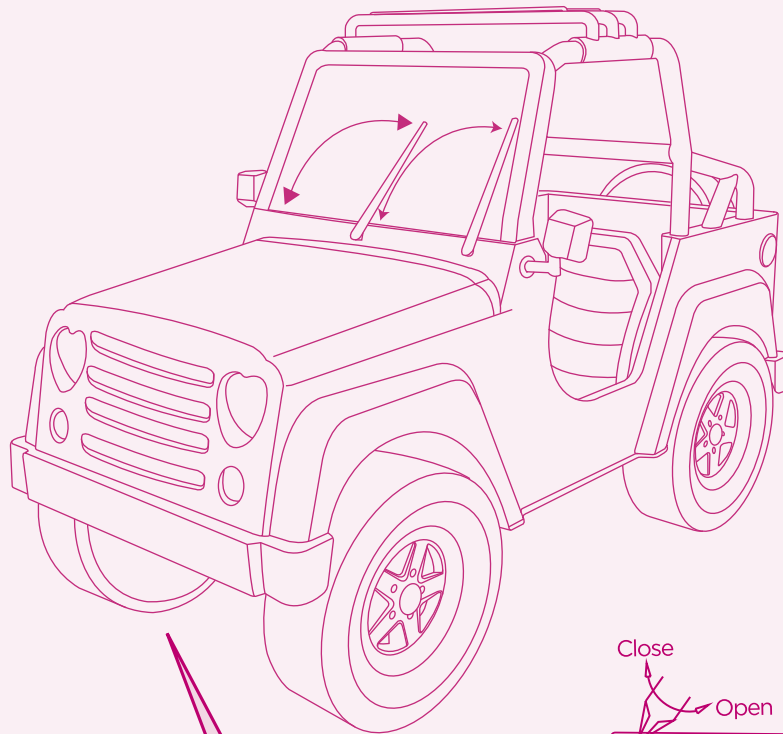


OG Off Roader™

Instructions



Bluetooth user guidelines:

First time set up:

- 1) Turn off all Bluetooth devices nearby. i.e., speakers, phone, handfree, control devices etc.
- 2) Press jeep Bluetooth button (blue light will flash on to connect). Press again to turn off.
- 3) Turn on your phone's Bluetooth.
- 4) Search for "OG Off Roader"; select. Phone is now linked with the jeep and music will play.

Note: If blue light is dimmed, it's almost time to replace with new alkaline batteries.

Radio guidelines:

• FM (88-108Mhz) radio reception is very dependent on geographical location. This product is designed for use in regions with adequate radio reception, and is not intended for regular radio use.

• If abnormal sounds are produced, push car's bottom power switch to "OFF" for 2 seconds and then push back to "Play".

• Please read this instruction sheet carefully and keep it for future reference.

The product contains the Bluetooth play function, which can link to any smart device with Bluetooth V2.1 and above.

QDID number: 61231

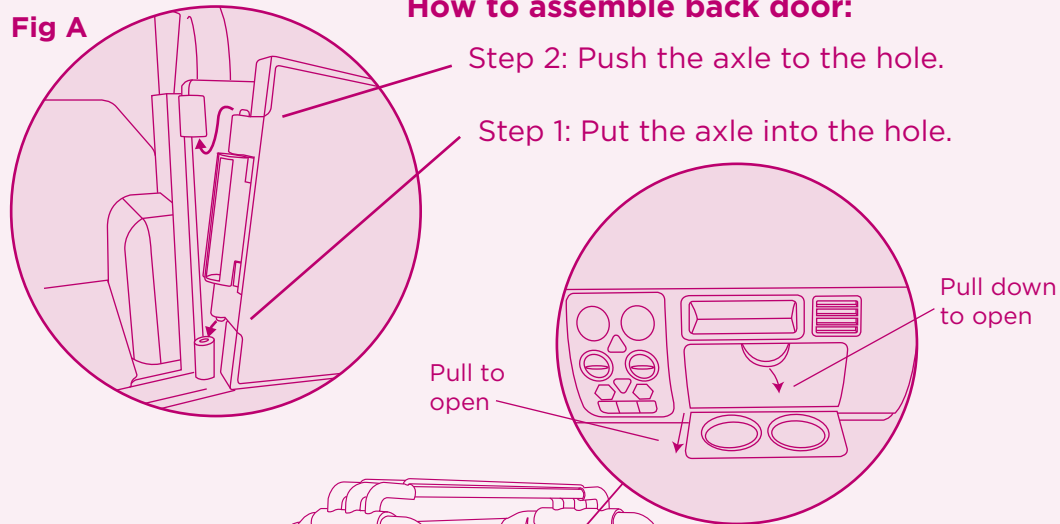


BD37958

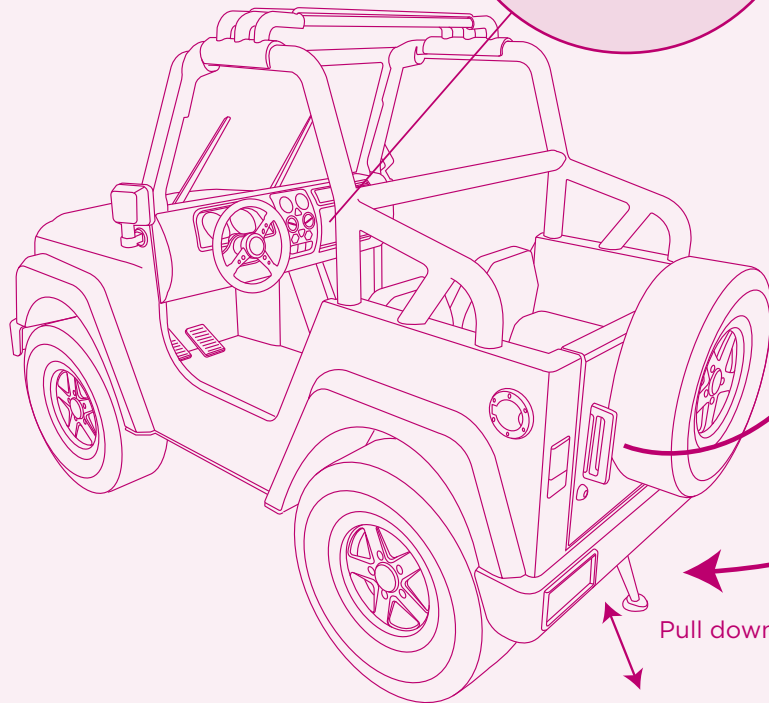
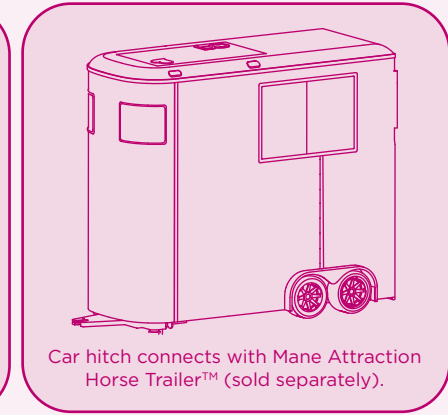


Fig A

How to assemble back door:



How to attach Suite Star Trailer™ and Mane Attraction Horse Trailer™:



Pull to open the door. (If the door falls off, please assemble it as Fig A.)

Pull down the hitch to connect the car.

CAN ICES-3 (B)/NMB-3(B)

This device complies with Industry Canada licence-exempt RSS standard(s). Operation is subject to the following two conditions: (1) this device may not cause interference, and (2) this device must accept any interference, including interference that may cause undesired operation of the device. Under Industry Canada regulations, this radio transmitter may only operate using an antenna of a type and maximum (or lesser) gain approved for the transmitter by Industry Canada. To reduce potential radio interference to other users, the antenna type and its gain should be so chosen that the equivalent isotropically radiated power (e.i.r.p.) is not more than that necessary for successful communication.

Conformément à la réglementation d'Industrie Canada, le présent émetteur radio peut fonctionner avec une antenne d'un type et d'un gain maximal (ou inférieur) approuvé pour l'émetteur par Industrie Canada. Dans le but de réduire les risques de brouillage radioélectrique à l'intention des autres utilisateurs, il faut choisir le type d'antenne et son gain de sorte que la puissance isotrope rayonnée équivalente (p.i.r.e.) ne dépasse pas l'intensité nécessaire à l'établissement d'une communication satisfaisante. Le présent appareil est conforme aux CNR d'Industrie Canada applicables aux appareils radio exempts de licence. L'exploitation est autorisée aux deux conditions suivantes : (1) l'appareil ne doit pas produire de brouillage, et (2) l'utilisateur de l'appareil doit accepter tout brouillage radioélectrique subi, même si le brouillage est susceptible d'en compromettre le fonctionnement.

Warning: Changes or modifications to this unit not expressly approved by the party responsible for compliance could void the user's authority to operate the equipment.

NOTE: This equipment has been tested and found to comply with the limits for a Class B digital device, pursuant to Part 15 of the FCC Rules. These limits are designed to provide reasonable protection against harmful interference in a residential installation. This equipment generates, uses and can radiate radio frequency energy and, if not installed and used in accordance with the instructions, may cause harmful interference to radio communications. However, there is no guarantee that interference will not occur in a particular installation. If this equipment does cause harmful interference to radio or television reception, which can be determined by turning the equipment off and on, the user is encouraged to try to correct the interference by one or more of the following measures:

- Reorient or relocate the receiving antenna.
- Increase the separation between the equipment and receiver.
- Connect the equipment into an outlet on a circuit different from that to which the receiver is connected.
- Consult the dealer or an experienced radio/TV technician for help.

This device complies with Part 15 of the FCC Rules. Operation is subject to the following two conditions: (1) this device may not cause harmful interference, and (2) this device must accept any interference received, including interference that may cause undesired operation. Shielded cables must be used with this unit to ensure compliance with the Class B FCC limits. FCC RF Radiation Exposure Statement Caution: To maintain compliance with the FCC's RF exposure guidelines, place the product at least 20cm from nearby persons. The device must not be co-located or operating in conjunction with any other antenna or transmitter. "This device complies with FCC radiation exposure limits set forth for general population (uncontrolled exposure). This device must not be collocated or operating in conjunction with any other antenna or transmitter."

age 3+



Please remove all packaging materials before giving to children.

CAUTION:

Uses 3 x AA (1.5V) size batteries - Included
Do not mix old and new batteries. Do not mix alkaline, standard (carbon-zinc), or rechargeable batteries.
Do not dispose of this product in fire. Batteries inside product may explode or leak.



WARNING:

CHOKING HAZARD - Small parts.
Not for children under 3 years.